

# CAN GATEWAY

## CAN-GW A CAN-GW LOG

- The CAN-GW unit acts as a “gateway”, ensuring the forwarding of messages between two CAN buses.
- The expanded version of the CAN-GW LOG fulfils the same functions and also writes records in its internal memory on basic operational events and errors reported by the diagnostic protocols DM1 and EDM.

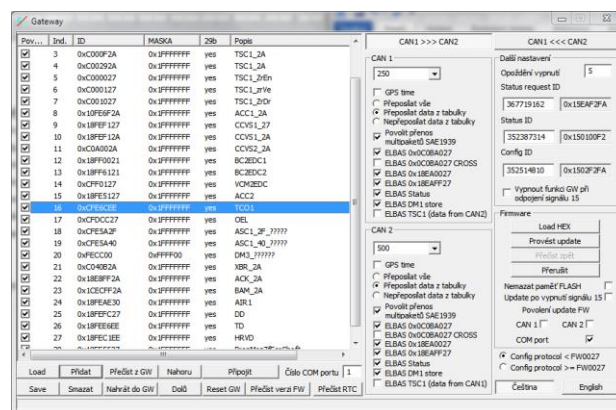


### Gatewaying

Information on the transfer rate of the CAN buses is stored in the memory of the CAN-GW for each CAN bus, as well as a table of messages, which are forwarded to the second bus after they appear in the first one. The buses may have different transmission speeds; the table can be formulated as a list of all messages to be forwarded or alternatively as a list of messages that are to be forwarded. Forwarding can also be configured for multi-packet messages (SAE J1939 / 21).

Some CAN messages, according to SAE J1939, have a byte in the data field which indicates the order of the messages and the “checksum”. Programming this type of functionality in a high-level development environment for control system programming is not possible. The solution may be to use the CAN-GW, where it is possible to select the addition of this information into the data field of the forwarded message.

Analogously, the CAN-GW may change the message identifier or modify the data field according to specific requirements.



### Logging

The following records are saved on the internal 4 MB memory:

- Key-on / Key-off
- Start / End of travel
- Start / End of an error code from DM1 and EDM diagnostics (SA, DTC)

All records can be supplemented with information on the time and position information obtained from the GPS signal.

Records of each trip and diagnosed errors also include data from the odometer.

Records from the CAN-GW memory can also be read and managed via the CAN.

Product name	CAN-GW, CAN-GW LOG
Applications	Commercial vehicles, mobile machinery
Data inputs	2x CAN as per ISO 11898 (SAE J1939, ISO 11519, ISO11992, ISO 15765, ....) Series link DTCO (D8, as per the EU 1360/2002 Bulletin) GPS (if installed)
Indications	4 multi-coloured LEDs: Power, CAN, DTCO, Memory card
Housing	Plastic / Metal
Power	+16 – +30 V DC
Connectors	Tyco 173853-1 (MUL 70 – 18pin white), contact 173631-1, 1x GPS (if installed)
Working environment	-20 - +60° C, relative humidity up to 90%, IP 42, vibration resistance 5g

## LED indication



## Dimensions and pinout

